

Reprinted with permission from

AUDIO VIDEO

Issue • 115

“the CC-450 sounds clear as a bell, endowing movie soundtrack dialogue with crystalline projection... you can always hear what the actors are saying.”

***“DYNAMIC, CLEAR...
PROJECTS DIALOGUE WITH INCISIVE
CONFIDENCE AND ACCURACY.”***



Canadian speaker manufacturer Paradigm has made quite an impression on Audio Video SA reviewers since its products became available locally.

We've been impressed by the mix of build quality, sonic talent and value for money that typifies most of the examples we've evaluated. That's especially true of the Reference models, which provide an exceptional ratio of performance to expenditure.

The Reference CC-450 centre channel speaker is meant to partner the LCR-450 main channel speakers and the ADP-450 surrounds, but is reviewed here as an add-on centre channel for those who plan on employing their existing speakers.

Be aware, however, that a maxim of great home theatre sound is that the centre channel should match the sonic characteristics of the main front channel speakers as closely as possible to allow for

seamless staging and tonality. In this case, you may find that the CC-450 will make you seriously consider upgrading your main speakers!

Measuring 650 x 210 x 300 mm and weighing 13 kg, the rather large CC-450 employs dual 170 mm mica-polymer cone mid/bass drivers framing a centrally mounted 25 mm aluminum dome tweeter. The two-way design employs a magnetically shielded, bass-reflex enclosure.

Sensitivity is rated at an easy-to-drive 90 dB, while the quoted frequency response is 70 Hz to 22 kHz, although Paradigm claims that low-frequency extension reaches 45 Hz. Maximum input power is 130 watts.

***“...transparency and...
detail that allows for
seamless integration...”***

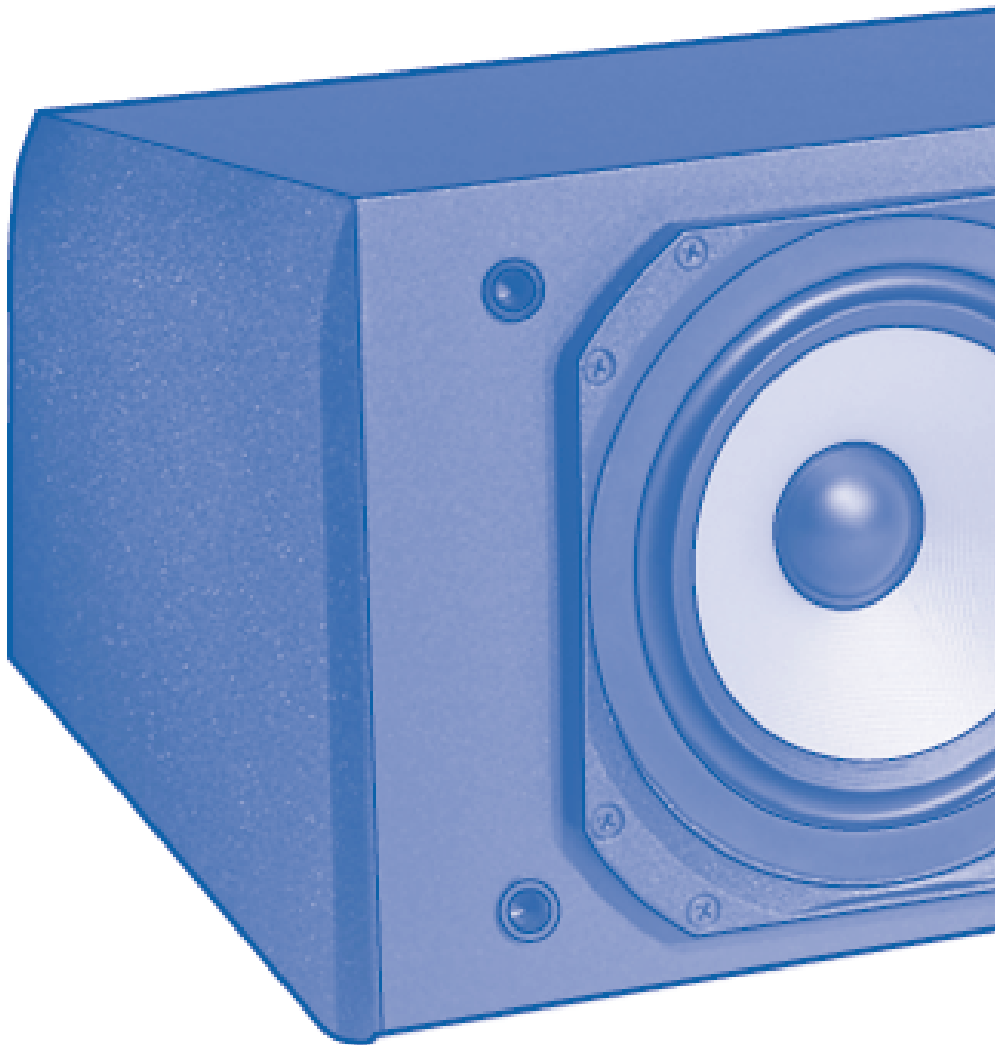
In practice, the CC-450 sounds clear as a bell, endowing movie soundtrack dialogue with crystalline projection that easily cuts through the booms, bangs and crashes of special effects, and ensures that you can always hear what the actors are saying.

Not only that, but it contributes significantly to the all-important front staging, displaying a talent for transparency and attention to detail that allows for seamless integration of the centre channel into the overall sound picture. Its tonal range is impressive (including low-frequency response) and its reactions are agile.

“...an aristocratic home theatre performer... that certainly delivers the sonic goods.”

The Paradigm CC-450 is an aristocratic home theatre performer, and a centre channel speaker that certainly delivers the sonic goods. Now just imagine what a full Reference 450 home theatre speaker system would sound like...

Verdict: Dynamic, clear performance that projects dialogue with incisive confidence and accuracy. However, you could find that it upstages your existing main channel speakers!



CC-450

