

What's in the box ...

Functions and LED Indication

FUNCTION AND OPERATION	LED
System OFF: Press POWER	●
System ON: Press POWER	●
Auxiliary 3.5 mm Stereo Source: Press SOURCE once	●x1 > ●
Analog RCA Source: Press SOURCE a second time	●x2 > ●
Digital Optical Source: Press SOURCE a third time	●x3 > ●
Bluetooth Wireless Connection: Press SOURCE a fourth time (see Bluetooth connection for details)	●x4 rapid > ●
Wireless Soundbar / Subwoofer Connection: Press SYNC. LED flashes and stops flashing once there is a connection	●x1 > ●
Volume Up/Down: Press UP ARROW or DOWN ARROW	●x1 > ●
Max Volume: When volume is set to maximum level the LED brightness increases and flashes rapidly	●x1 rapid > ●
Min Volume: When volume is set to minimum level the LED brightness increases and flashes rapidly	●x1 rapid > ●

Bluetooth Connection

- FIRST TIME CONNECTION:** To connect a phone/tablet that HAS NEVER been connected to the Soundtrack 2, press the Enable Bluetooth button on your remote or press the Source button (multiple times if necessary) on the top-panel of the soundbar until the soundbar LED rapidly flashes RED then BLUE (●x4 rapid > ●). The connection process will take approximately 1 minute. See Step 2.

PREVIOUSLY CONNECTED: If your phone/tablet HAS previously been connected to Soundtrack 2, the LED will flash RED then BLUE ONCE (●x1 > ●). Select Bluetooth as your playback option and skip step 2.
- While the LED on the soundbar alternates between RED and BLUE (●x1 > ●), enable Bluetooth on your phone/tablet and search for "Soundtrack 2" on your Bluetooth device list. Select "Soundtrack 2" to establish a connection. Once a connection is established, the LED illuminates Solid Blue (●). Depending on phone/tablet you may need to change the playback device to "Soundtrack 2" or it may change automatically.

Manufactured under license from Dolby Laboratories. Dolby and the double-D symbol are trademarks of Dolby Laboratories.
The Bluetooth® word mark and logos are registered trademarks owned by Bluetooth SIG, Inc. and any use of such marks by Paradigm Electronics Inc. is under license.
The "aptX®" software is copyright CSR plc or its group companies. All rights reserved. The aptX® mark and the aptX logo are trade marks of CSR plc or one of its group companies and may be registered in one or more jurisdictions.

For more information visit paradigm.com/shift



Paradigm®



The Official Sound of **YOU™**
soundtrack 2
System

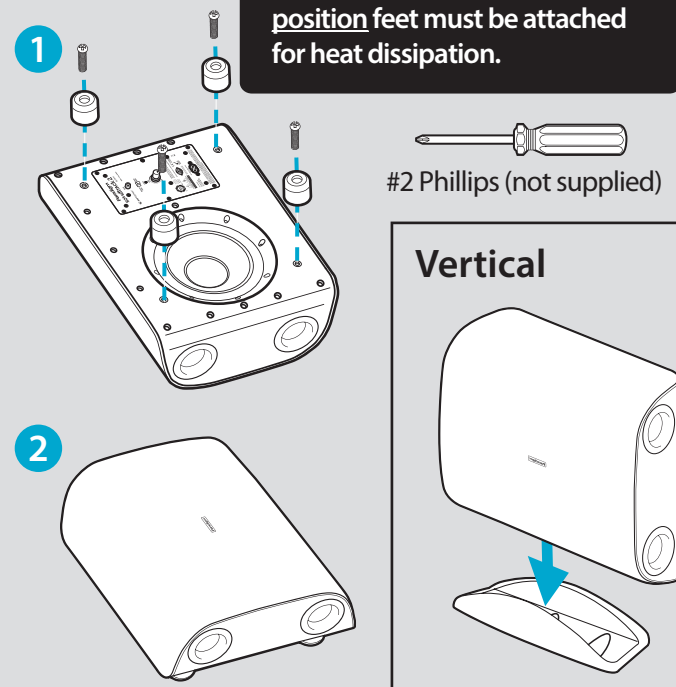
Set-Up Guide



WARNING! THE SET-UP AND SYNCING STEPS MUST BE DONE IN THE FOLLOWING ORDER. DO NOT PLUG IN SUBWOOFER UNTIL STEP 7.

Choose subwoofer orientation

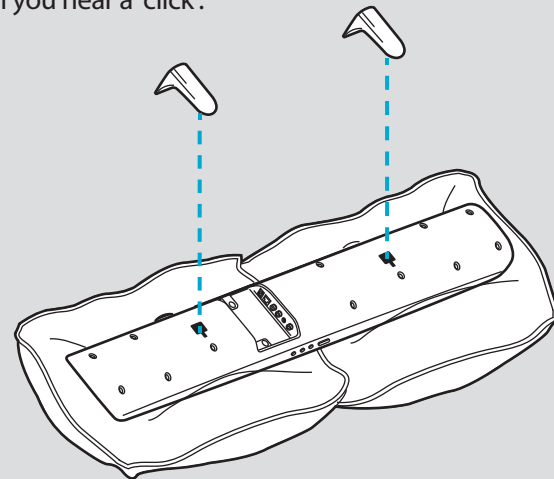
Horizontal



Setting up the soundbar

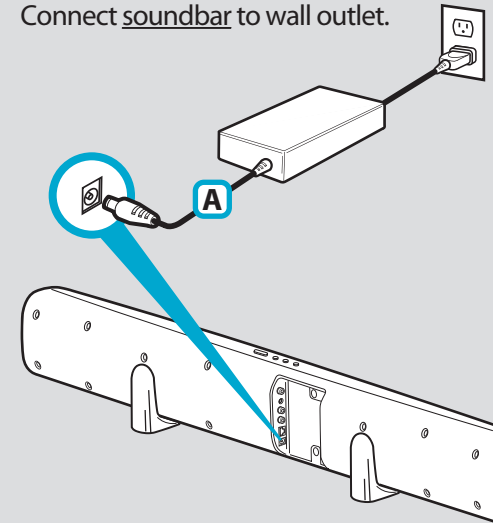
1 Attaching soundbar feet

Lay your soundbar face down on a soft surface. Insert feet as shown, press firmly until you hear a 'click'.



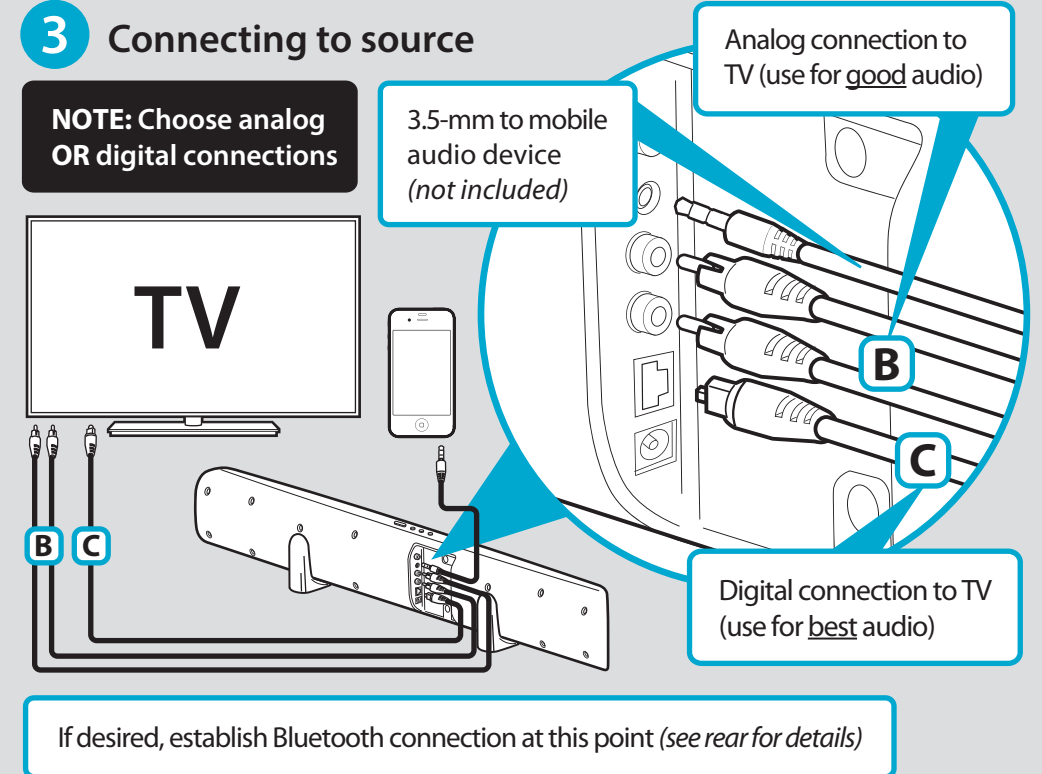
2 Power connection

Connect soundbar to wall outlet.



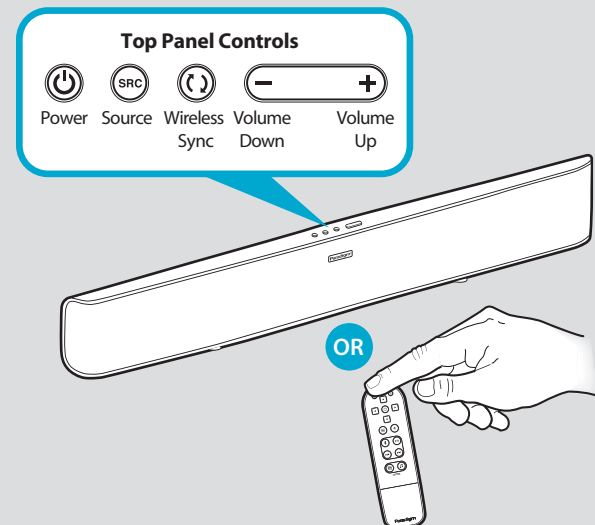
3 Connecting to source

NOTE: Choose analog OR digital connections



4 Power on, then initiate audio

Using the Remote or Top Panel Controls, turn Power ON. Then repeatedly press the Source button until you hear audio from your device (TV, iPhone, etc).

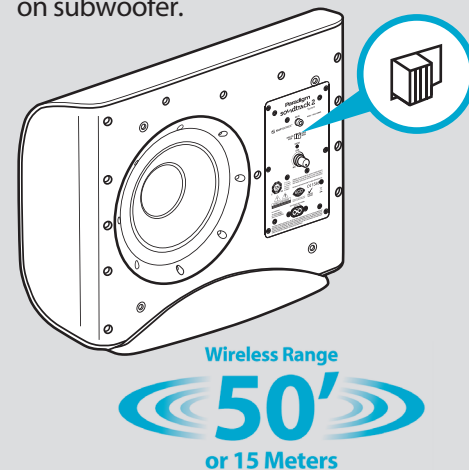


Wireless subwoofer pairing

5 Wireless setting

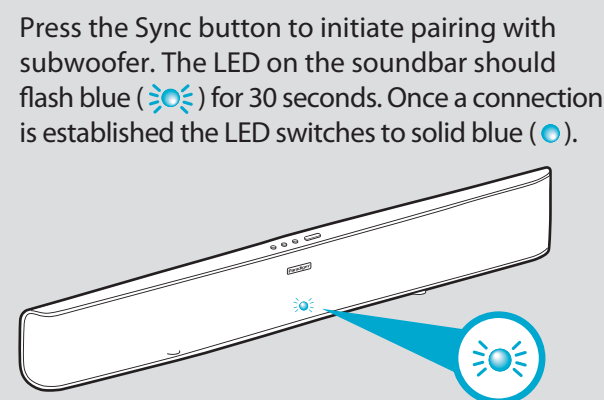
DO NOT connect subwoofer to wall outlet until step 7.

Move switch to 'wireless' setting on subwoofer.



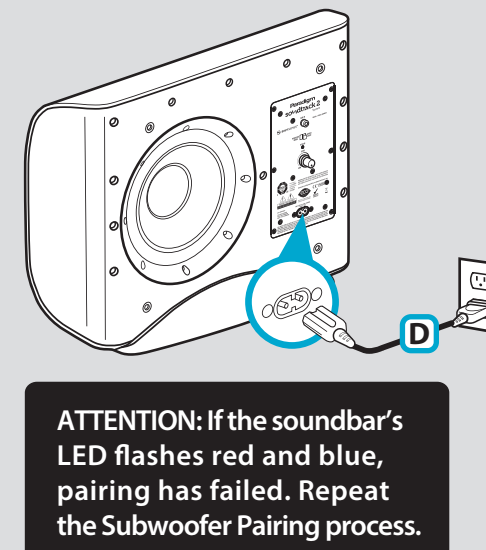
6 Syncing

ATTENTION: From the moment you press the soundbar's 'Sync' button you have 30 seconds to connect the subwoofer to the wall outlet.



7 Power connection

Connect subwoofer to wall outlet.



8 Adjust subwoofer loudness

Your subwoofer's LEVEL knob is set to 12 o'clock to suit average preferences. If desired, adjust up or down to match sound level of your speakers.

